

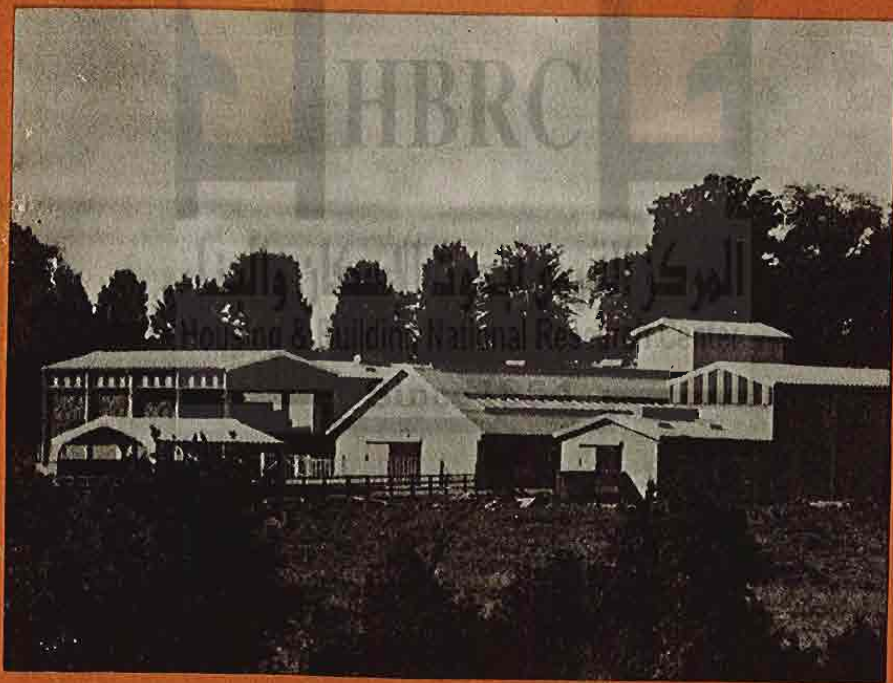
C E M E N T A N D C O N C R E T E A S S O C I A T I O N

FARM

BUILDING

CONSTRUCTION

مكتبة
الهندسة
المدنية
HBRC



D.31A13

16

BUILDING



CONSTRUCTION

١٩٦٢ ديسمبر ١٩ ٨٥٧٣

SETTING OUT

The first step in the construction of any building is the 'setting out'—marking the position of the building on the site with pegs and lines.

The main operations involved in setting out are as follows:

1. Strip turf and surface soil from the site, and clear it of any trees and shrubs, digging out their roots. If existing drains cross the site, either divert them, or re-lay them in a straight line across the site at the maximum possible depth consistent with required falls, and with a 6 in. thick surround of concrete of the same quality as that used for the foundations.
2. Stretch a line between two pegs to mark the front of the building. (This line should be considerably longer than the finished building will be.)
3. Drive a peg along this line to mark one corner of the building.
4. From the corner peg, stretch another line at right angles to the first one, to mark one side of the building.

(An accurate right angle can be set out by making a triangle with sides in the ratio of 3:4:5. For instance, 40 ft. might be measured along the frontage line, starting from the corner peg, and the point marked with a $\frac{1}{4}$ in. steel peg. A tape 30 ft. long is then attached to the corner peg and a tape 50 ft. long to the steel peg, and the tapes pulled taut to meet and form a triangle; the point at which the ends of the two tapes meet will be on a line precisely at right angles to the frontage line. Alternatively, a large building square may be used. This is a triangle with sides proportionate to 3:4:5; it is made up of three wooden 3 in. by 1 in. battens nailed together.)

5. Two further corners can now be located by measuring the length of the building along the frontage, and the width of the building along the side. (*Outside* dimensions should be used for measuring.)
6. The remaining corner can then be located easily by measurement from the two corner pegs set out in (5) by means of tapes equal in length to the front and side of

٢ التوسيع