

October, 1955

Building Bulletin

5

NEW COLLEGES OF
FURTHER EDUCATION

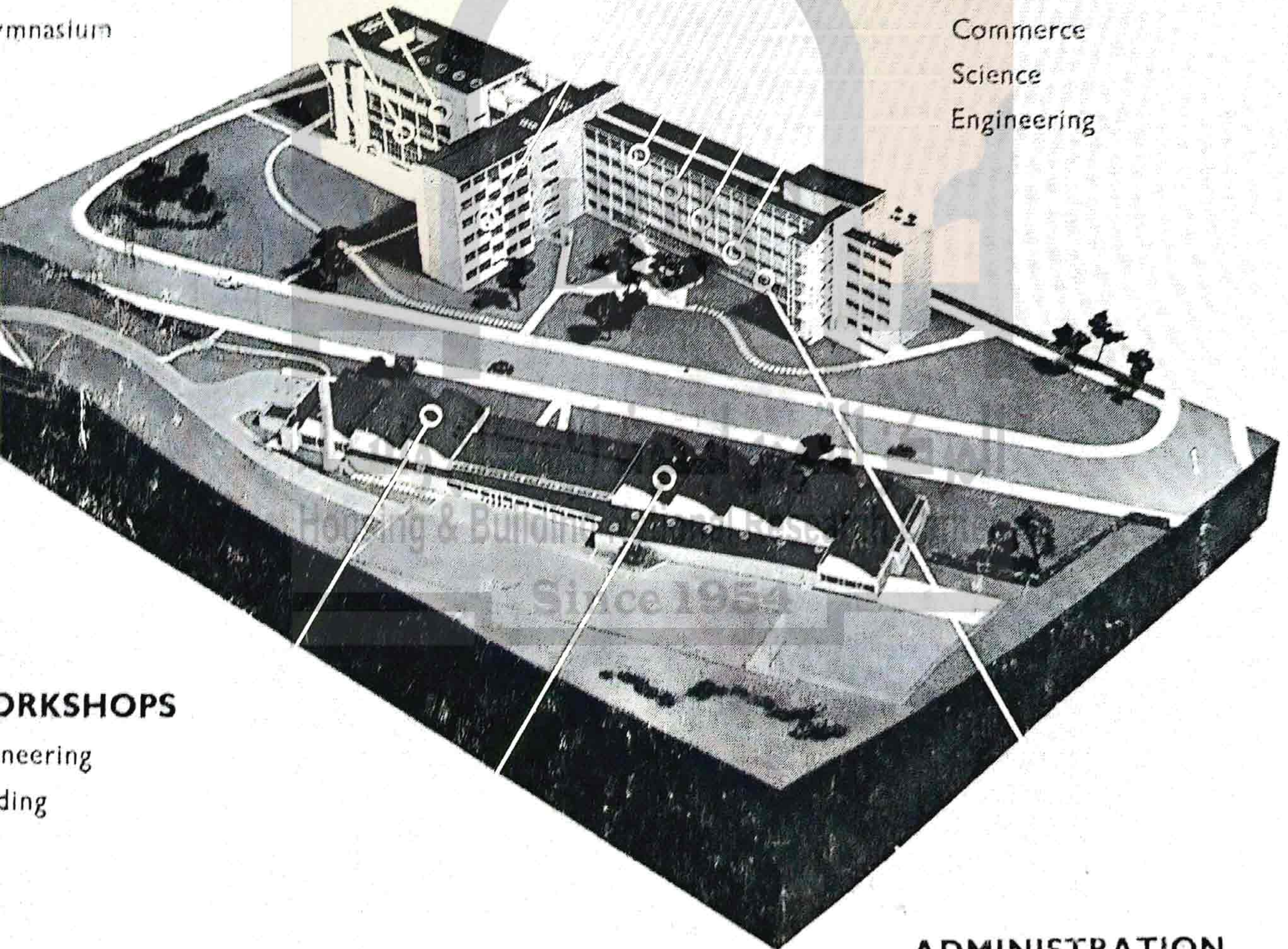
(Second Edition)

COMMUNAL

Living Room
Hall
Gymnasium

TEACHING

Classrooms
Art and Crafts
Commerce
Science
Engineering



WORKSHOPS

Engineering
Building

ADMINISTRATION

PLANNING REQUIREMENTS : INDIVIDUAL ROOMS

SUBJECT

ROOM

NOTES 1---

- (1) Few services -- heating, few light and power points and one basin or sink with h. and c. supply.
- (2) I.e., complete darkness necessary for experiments. Blackout for projection see horizontal serial 54.
- (3) The minimum 2% daylight factor required for school classrooms is also desirable in these teaching rooms. In multi-storey buildings where this factor can only be obtained by unduly increasing the cost of the building and its heating, consideration should be given to supplementing a lower standard of daylight, when necessary, with the artificial lighting.

SECTION I. GENERAL REQUIREMENTS

ZONING	ALLOTTED ZONE.—In Italics—widely varying requirements : consult local needs. a—ancillary room.			1	
	Heavy and bulky equipment and materials	Very Nolsy	Clean	A	2
		Considerable Vibration	Dirt, dust or fumes	A	3
		Not very nolsy	Dirt, dust or fumes	A	4
	Ground floor desirable		Clean	B	5
	Light and small equipment and materials	Quiet not essential	Special services	C	6
			Few services only (1)	D	7
	Any floor	Quiet essential		E	8
PHYSICAL CONDITIONS	LIGHTING	DAYLIGHT	Not essential	9	
			North light preferable	10	
			Control of sunlight by blinds	11	
		ARTIFICIAL	Exclusion of light essential by blinds to give complete black-out (2)	12	
			Non-stroboscopic essential	13	
			Colour discrimination essential	14	
		STANDARDS	General lighting only. Min. illumination of 10 f.c. or 2% daylight factor (3)	15	
			Individual directional lighting. Min. 25 f.c.	16	
			Individual directional lighting. Min. 50 f.c.	17	
	HEATING	Directional lighting for demonstration purposes		18	
		Heavy manual activity		19	
		Equipment producing heat		20	
		Sedentary occupations only		21	
		Control of room temperature essential		22	
	VENTILATION	Control of room temperature desirable		23	
		Mechanical ventilation essential ; from room		24	
	SOUND	Mechanical ventilation essential : from equipment, fume cupboards, etc.		25	
		Control of noise desirable		26	
Exclusion of vibration essential		27			

Cross Reference

Serial No.

to Appendix 1

Area in sq. ft.

PLANNING REQUIREMENTS : INDIVIDUAL ROOMS (continued)

SUBJECTS
ROOM
ALLOTTED ZONE

SECTION II. DETAILED REQUIREMENTS.

SPECIAL SERVICES	WATER	Mains supply essential	28	
		Sink or basin with hot and cold water supply adjacent to the wall	29	
	FITTINGS WITH WATER SUPPLY AND DRAINAGE		Several sinks and/or taps, adjacent to the wall	30
			Several sinks and/or taps, in centre of the room	31
			Equipment supplied with water ; for cooling, etc.	32
	DRAINAGE	Wash-down sumps in floor	33	
	ELECTRICITY		A.C. 3 phase supply 400 v.	34
			A.C. single phase supply 240 v. to several sockets	35
	FITTINGS WITH ELECTRICITY SUPPLY		Benches adjacent to the wall with sockets	36
			Benches in centre of the room with sockets	37
			Equipment supplied with electricity ; for motors, heating, etc.	38
	FITTINGS WITH GAS SUPPLY		Benches adjacent to the wall with gas taps	39
		Benches in centre of the room with gas taps	40	
		Equipment supplied with gas.	41	
EQUIPMENT	WEIGHT	Light equipment only	42	
		Comparatively light equipment : 60-100 lbs. per sq. ft.	43	
		Heavy equipment ; 100-200 lbs. per sq. ft., most suitably sited on the ground floor	44	
		Heavy equipment : over 200 lbs. per sq. ft. with very heavy concentrated loads	45	
		Equipment with moving parts, producing vibration or very heavy impact load	46	
SIZE	Equipment requiring, at least, double doors 5 ft. 0 in. by 7 ft. 0 in.	47		
FITTINGS	BENCHES	Demonstration bench	48	
		Benches adjacent to the wall	49	
		Benches in the centre of the room	50	
SEATING		Fixed seating	51	
		Seating in tiers. 6 in. rise (approx.)	52	
		Seating in tiers. 1 ft, 6 in. rise (approx.)	53	
FITTINGS FOR PROJECTION. Screen, Blinds, etc.			54	

Cross Reference	Serial No.
to Appendix 1	Area in sq. ft.

	<i>Page</i>
III. COSTS	24
Cost per Square Foot	24
Nett and Gross Cost	24
IV. PROCEDURE	25
General Principles	25
V. DESIGN	27
GENERAL REQUIREMENTS	27
Educational Requirements	27
Physical Conditions	27
Orientation	27
Adaptable Buildings	27

	<i>Page</i>
Planning for Growth	27
Compact Planning	28
Linking of Instalments	28
THE PRINCIPLE OF ZONING	29
THE ZONING OF TEACHING ACCOM- MODATION	35
Five Types of Teaching Room	35
Physical Conditions	35
Adaptability	35
GROWTH	37
THE LINKING OF INSTALMENTS	42
Improvisation	42
ARRANGEMENT OF ROOMS WITHIN DEPARTMENTS	50

LIST OF DIAGRAMS

	<i>Page</i>		<i>Page</i>
DIAGRAM 1. Zoning	30	DIAGRAM 9. Zoning of Teaching Accommodation: Growth in Two Instalments	40
DIAGRAM 2. Zoning by Groups of Accommodation: Good Example..	31	DIAGRAM 10. The Linking of Instal- ments.	44
DIAGRAM 3. Zoning by Groups of Accommodation: Good Example..	32	DIAGRAM 11. The Linking of Instal- ments: First Instalment	45
DIAGRAM 4. Zoning by Groups of Accommodation: Bad Example ..	33	DIAGRAM 12. The Linking of Instal- ments: Second Instalment ..	46/47
DIAGRAM 5. Zoning by Groups of Accommodation: Bad Example ..	34	DIAGRAM 13. The Linking of Instal- ments: Third Instalment ..	48/49
DIAGRAM 6. Zoning of Teaching Accommodation: Four Possible Arrangements	36	DIAGRAM 14. Arrangement of Teach- ing Rooms within Departments: Engineering, Commerce, Science..	51
DIAGRAM 7. Zoning of Teaching Accommodation: Growth in Four Instalments	38	DIAGRAM 15. Arrangement of Teach- ing Rooms within Departments: Art and Crafts, Architecture, Catering and Women's Subjects ..	52
DIAGRAM 8. Zoning of Teaching Accommodation: Growth in Three Instalments	39		

LIST OF TABLES AND SUMMARIES

	<i>Page</i>		<i>Page</i>
Summary of Four Types of Accommodation	9	Size of Assembly Halls	14
Recommended Areas of Teaching Rooms	11	Areas of Kitchens per Meal Served ..	15
Areas per Student Place of Administrative and Communal Accommodation	13	Scale of Sanitary Fittings	18
		Costs per Square Foot	24

LIST OF APPENDICES

	<i>Page</i>		<i>Page</i>
APPENDIX 1. Specimen Schedules of Accommodation	53	APPENDIX 2. Specimen Report at Sketch Plan Stage	72
Notes	53	APPENDIX 3. Planning Requirements of Individual Teaching Rooms..	75
Section I: Schedule of Complete College	54	Notes	75
Section II: Schedule of First Instalment.. .. .	65	Section I: General Requirements..	76
		Section II: Detailed Requirements	82

HBRC

FRONT COVER

The photograph on the front cover is of a model of the Merthyr Tydfil College of Further Education (architects: Yorke, Rosenberg and Mardall).

المركز القومي لبحوث الإسكان والبناء
Housing & Building National Research Center

Since 1954