

project

SCHOOL
FURNITURE

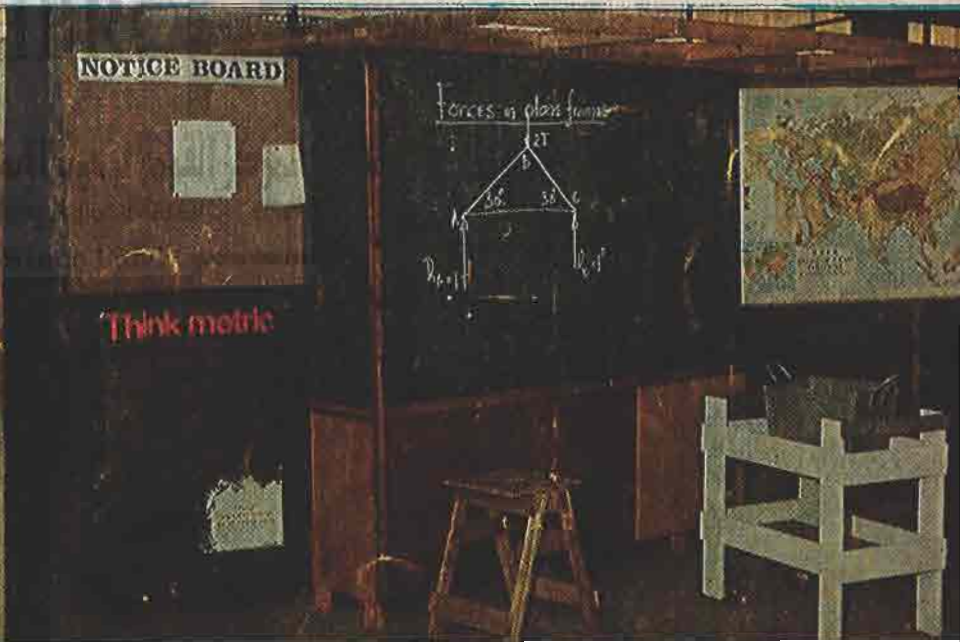
SCIENCE
STORAGE
UNIT

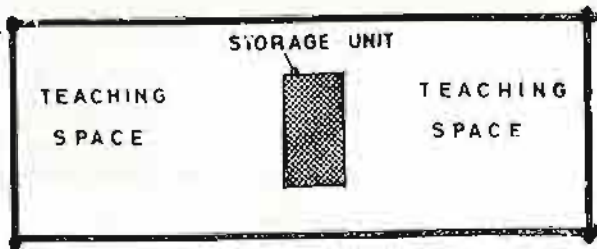
D.
31 B 44



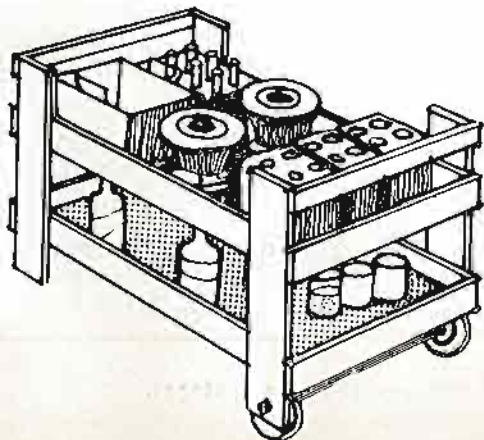
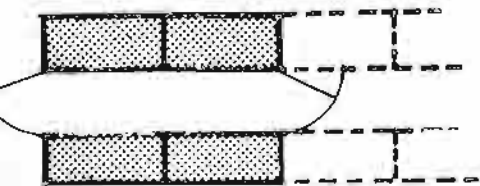
ASIAN REGIONAL
INSTITUTE FOR
SCHOOL BUILDING
RESEARCH
sponsored by
UNESCO
p.o. box 1368
COLOMBO, CEYLON

بمركز البحوث
المنهجية
17784





EXISTING STORAGE UNIT



WHAT IS IT?

A Storage unit which meets two basic requirements:

- 1) flexibility of teaching space:
- 2) flexibility of storage space:

Containing:

equipment, apparatus, materials, water containers, transportable sinks sources of energy such as batteries, spirit lamps; preparation surfaces books, museum items, teacher's personal belongings, movable trolleys for transportation etc., etc.,

It is suitable for all teaching spaces requiring storage such as: rooms for general science, home science, arts and crafts, music and also for economics dept., laboratories for ordinary and advanced level. etc., etc.,

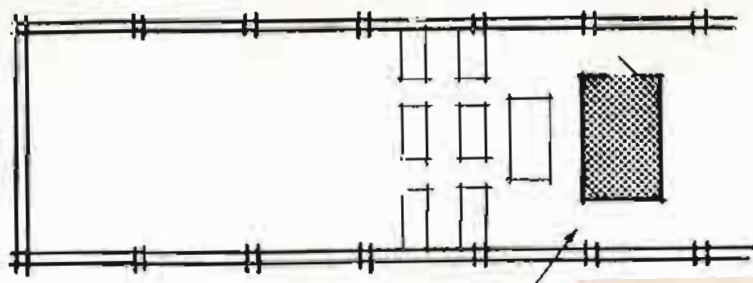
HBRC

المركز القومي لبحوث الإسكان والبناء
Housing & Building National Research Center

Since 1954

HOW TO USE IT?

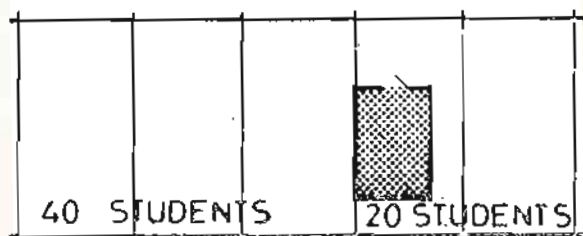
The teacher unlocks the storage unit. Items for the subject to be taught are chosen by the teacher or senior students. The items are assembled on preparation surface or directly on movable trolleys and transported to the working places. At the end of the period, the trolleys with equipment are wheeled back into the store, and items are cleaned, sorted and replaced on to the shelves.



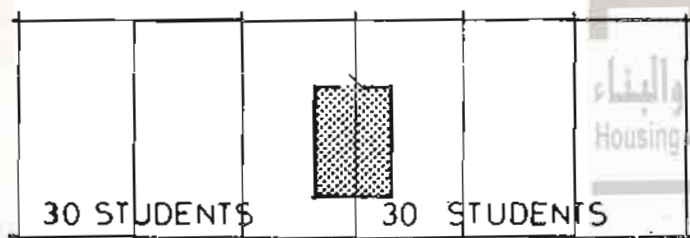
equipment movable
service units, space
for dark room work
and projects

WHERE TO PLACE IT?

The unit is acting as partition between teaching areas, therefore, the location of the unit should be considered very carefully, leaving sufficient teaching spaces for selected numbers of students in adjacent areas. The size of the unit and its location are determined by the actual need for storage and preparation space.

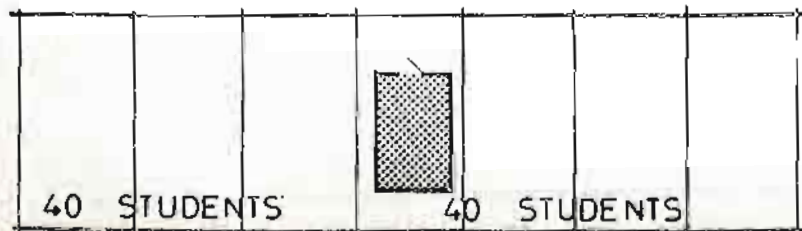


Open hall laboratory, alternative positions of storage unit depending on class sizes.



HOW TO ASSEMBLE IT?

Storage unit should be constructed by using simple elements made of locally available materials. It should be easily transportable and of simple construction which enables the teacher in remote local areas to assemble the unit by himself with the help of untrained personnel.



The following pages illustrate the Ceylon case study. The elements made of wood were constructed by the central wood-work industry and will be transported to 100 schools, many of them in rural areas.

Illustrations describe assembly of the unit in stages.